

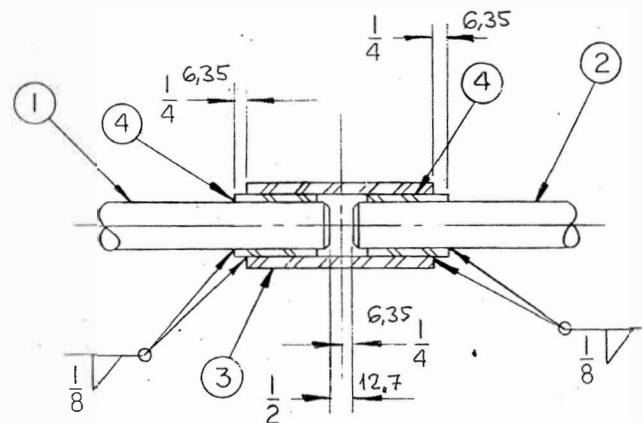
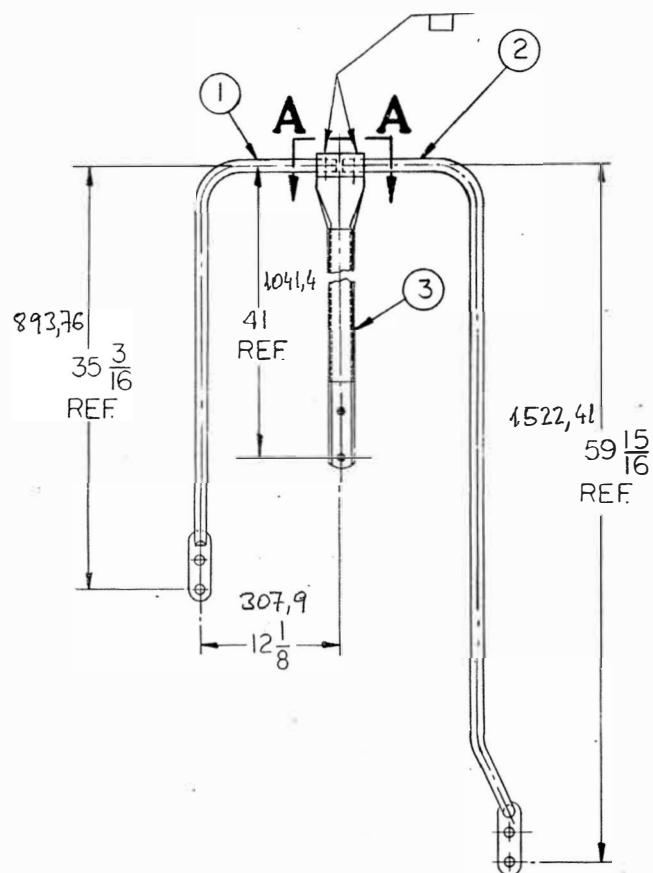
8475815

UNLESS OTHERWISE SPECIFIED, ALL DIMENSIONS ARE IN INCHES AND DECIMALS THEREOF.

BREAK ALL SHARP CORNERS UNLESS OTHERWISE SPECIFIED.

COUNTERFINES, ALL TAPPED HOLES 1/16" &amp; ONE THIRD DEEP.

SURFACE FINISH: SP. 556, 18-1/2



SECTION A-A

Yer No Sira No  
1 1656

2		TUBING - 1 1/4	8315564	4	200
1		HANDRAIL SUPPORT ASM	8379948	3	194
1		HANDRAIL ASM	8429049	2	2781
1		HANDRAIL ASM	8385348	1	186
NO. REQ.		NAME OF PART	PART NO.	ITEM NO.	
ELECTRO-MOTIVE DIVISION GENERAL MOTORS CORPORATION LA GRANGE, ILLINOIS, U.S.A.					
HANDRAIL ASM					
DR. R. Conrad	DATE 4-10-72				
CK. J. Bucher	DATE 4-14-72				
APP. R. Conrad	DATE 4-20-72				
WELD. R. CN	DATE 4-24-72				
MOD. R. CN	DATE 4-24-72				
14052	AT:3 P/N WAS 8379953				
EX-21556	GTZ6CW-2				

8475815

1651